

User's Manual for ZKSD3 Series PTZ Dome IP Camera

Document Version: 1.7

Date: 2012.12

Introduction

This document mainly introduces the functional features, installation process and access methods of ZKSD3 series IPC.

Important Notices

Thanks for selecting our company's IPC. Before use, please read through the user's guide to avoid any unnecessary damage!

All functions depend on the actual product. Since the product is subject to updating, our company is not responsible for any difference from this guide and not liable for any dispute over different technical parameters from this guide. The project is subject to any change without notice.

To learn more, please visit our company's website www.zkivision.com or local office.

Table of Contents

1 Overview.....	1
1.1 Product Description	1
1.2 Product Features	1
1.3 Technical Parameters	3
1.4 Product Appearance	5
1.5 Connecting Terminal.....	6
1.6 Basic Procedure	9
2 Installation and Network Configuration	10
2.1 Hardware Installation.....	10
2.2 Network Connection.....	14
3 Accessing device	16
3.1 Using WEB Browser	16
3.2 Using RTSP Media Player	17
3.3 Using Mobile Phone	19
3.4 Using Video Surveillance Software	21
4 Extended Functions	23

1 Overview

1.1 Product Description

The ZKSD3 series products are high-speed dome IP cameras with CCD sensors, which are integrated with multiple new technologies in mechanical, electronic and casting fields; they are high-performance integrative cameras with built-in zoom lens and high-end surveillance products combining the platform and digital decoder design, which represent new generation technologies. In virtue of arbitrary quick positioning and continuous tracking scan, the products implement the genuine omnibearing surveillance without blind spot.

The series products are applicable for indoor and outdoor places where special surveillance is needed, such as prisons, schools, factories and residence communities, etc, especially for open places, such as squares, roads and halls, as well as moving targets.

1.2 Product Features

Appearance

- Aluminum alloy housing
- Double-layer protective cover design, and best dustproof, waterproof, anti-corrosion and high temperature resistant capabilities
- Built-in temperature control system, used for automatically adjusting temperature
- Wire coming out from within, to better protect the wire

Interface

- Double web indicator lamps for easy judgment of web status
- Numerous additional functions, e.g. alarm, audio talkback, 485 control, TF card and reset, etc.

- Analog video signal output interface

Functions of the system

- 1/4" Sony high-performance CCD used for sharp images;
- Driven by precision motor, featuring sensitive response and steady operation; precision deviation is less than 0.1 degree; images are free of jitter at any speed;
- Automatic identification of Pelco-P/D protocol under RS-485 control;
- No data loss in case of power-fail;
- Power-fail status memory; once the power is recovered, the system will automatically be back to the previous status of the platform and lens;
- Built-in automatic temperature control system, used for automatically adjusting temperature
- Lightning protection and surge protection
- IP66 protection grade

Functions of the platform

- 360° continuous rotation in horizontal direction, -3°~90° continuous rotation in vertical direction, surveillance without blind zone;
- Maximum speed of horizontal preset point is up to 250°/s; maximum speed of vertical preset point is up to 100°/s;
- Horizontal keying speed is 0.1°~250°/s; vertical keying speed is 0.1°~100°/s;
- Support 256 preset positions;
- Support 8 cruise scans; 32 preset points can be added for each scan;
- Support 4 pattern scans; recording time of each path is more than 10 minutes;

- Support ratio zoom function; rotation speed can be automatically adjusted according to the zoom multiple.

Performance

- Hi3512 high-performance multimedia processor, supporting H.264 Main Profile video coding
- The highest resolution of images is to D1 (704 * 576) resolution
- Dual code stream, suitable for various networks
- Support the browsing by 20 users simultaneously, 10 in primary code stream and 10 in secondary code stream

1.3 Technical Parameters

Product Name	18-multiple zoom high-speed dome IP camera
Product Model	ZKSD330
Cam Properties	
Image Sensor	1/3" SONY CCD
Zoom Range	18-multiple optical zoom, 12-multiple electronic zoom
Minimum Brightness	0.1 Lux
Aperture	Automatic aperture; the electronic mode is preferential
Focus	Automatic focusing; the electronic mode is preferential
Video Coding	
Primary Processor	Hi3512
Operating System	Embedded Linux
Video Compression Algorithm	H.264 main profile level 3
Audio Compression Algorithm	G.726/G.711
Video Compression Code Rate	Primary Code Stream: 32~512 Kbits/s adjustable
	Secondary Code Stream: 32~256 Kbits/s adjustable
Video Resolution	Primary Code Stream: 704x576, 352x288, 176x144 optional

User's Manual for ZKSD3 Series PTZ Dome IP Camera V1.7

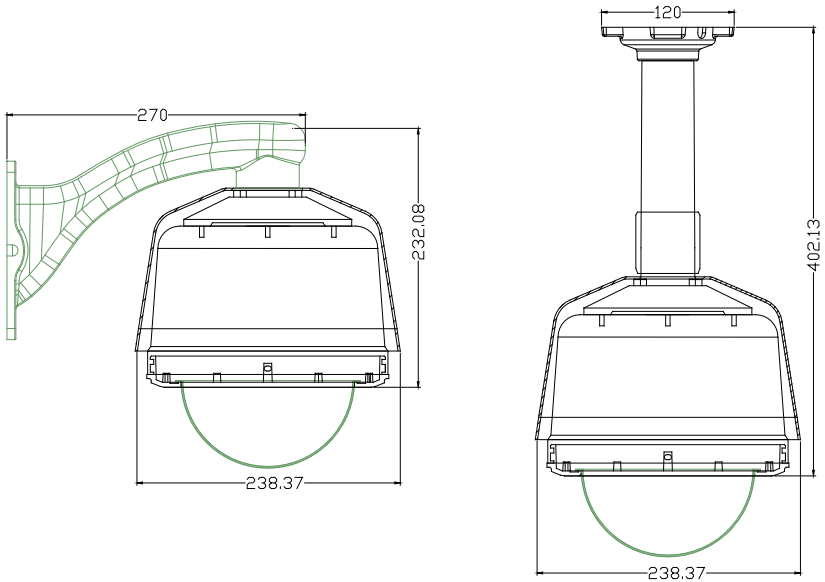
	Secondary Code Stream: 352x288, 176x144 optional
Video Frame Rate	1~25 frames optional
Functional Interfaces	
Audio Interface	1 Mic input and 1 linear output (optional)
Alarm Input	1 alarm input (normally opened or normally closed) (optional)
Alarm Output	1 switch output, maximum working voltage: AC 120V/1A, DC 24V/1A
Motion Detection	Allow 4 independent detection areas
Memory	Support SD card for video storage and image capture, 32G maximum (optional)
Network Interface	10Base-T/100Base-TX Ethernet interface
	WiFi 802.11b/g wireless (optional)
Supported Network Protocols	TCP/IP, HTTP, TCP, ICMP, UDP, ARP, IGMP, SMTP, FTP, DHCP, DNS, DDNS, NTP, UPNP and RTSP, etc.
PTZ	
Horizontal Speed	0.1°~250°/s
Vertical Speed	0.1°~100°/s
Speed of Preset Position	Horizontal Speed: 100°/s
	Vertical Speed: 250°/s
Automatic Scan Speed	1°~40°/s, which can be set up
Horizontal Rotation	360° continuous rotation
Vertical Rotation	-3°~90° rotation
Character Superposition	Display PTZ position and camera zoom information
Preset Position	255 preset positions and precision of preset positions is less than 0.1 degree
Scan Mode	Three scan modes: automatic /random/preset position cruise path
Limit Card	The scan limit and control limit can be set up
Preset Position Cruise	8 preset positions and the stay duration can be set up
Track Memory	2-track memory

Overview

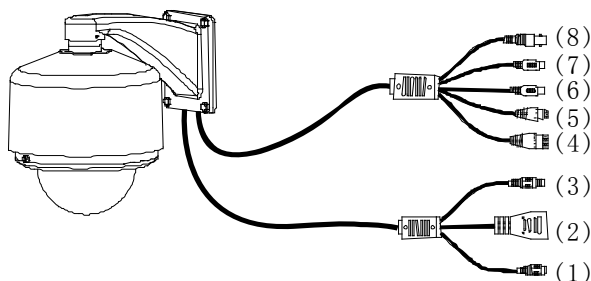
Working Environment	
Input Power	AC 24V, $\geq 2A$
	POE Ethernet power supply: comply with 802.3af regulation (optional)
Maximum Power Consumption	30W (without heater)
	40W (with heater)
Working Temperature	-40~+55 °C
Working Humidity	10%~85%RH
Level of Protection	IP66
Installation Mode	Wall-mounted / Pending mounted
net weight	4.5KG

1.4 Product Appearance

- Dimensional Drawing (in mm)



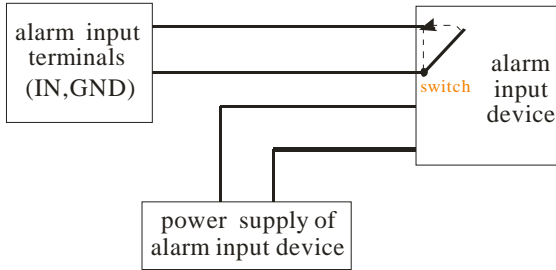
1.5 Connecting Terminal



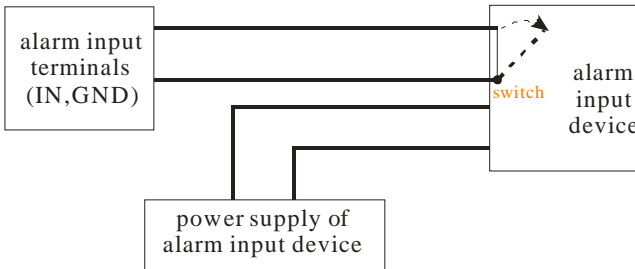
1. **Power Interface:** used for connecting the power adapter. The voltage of series products is 24V AC and the current is not lower than 2A. Other power is not allowed, in order to avoid damage of the cameras.
2. **Network Interface:** 10/100M self-adapting Ethernet interface is used to connect the camera with various network equipments, such as, switch, router and hub. When it is connected to 10M network, the orange lamp is also on. When it is connected to 100M network, the green lamp is always on.
3. **Reset Button:** When the camera fails to function during incorrect operation or accidental failure (e.g. forget IP address or password), or it is used in different scenes, press down the button for above 5s after a delay of 30s from powering on to restore the camera to its factory default. The default user's name is "admin", the default password is "admin" and the default IP address is "192.168.1.88".
4. **Alarm Interface:** Connect to alarm input and alarm output. When the camera receives an alarm from alarm output or Web motion detection, this interface can send a signal to alarm output to realize real-time monitoring and overall protection while triggering a remote alarm. The specific interfaces are presented in the following figure.



1. The schematic diagram of alarm input connection is as follows:



Schematic Diagram of Alarm Input (Normally Opened) Connection

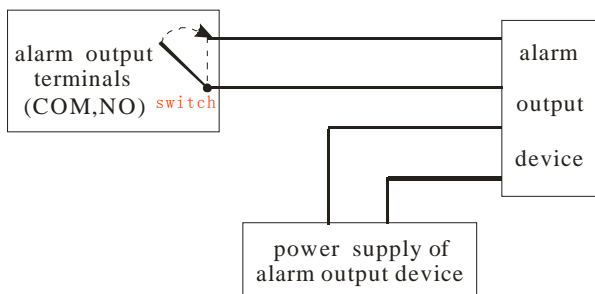


Schematic Diagram of Alarm Input (Normally Closed) Connection



Notice: When external alarm input is started, different alarm inputs have different software settings. Please select “Normally Opened” or “Normally Closed” on the Web page according to the type of alarm input.

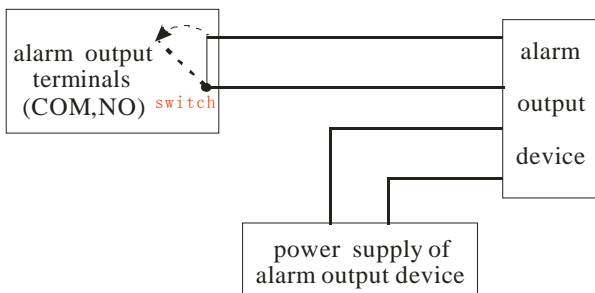
2. The schematic diagram of alarm output default connection is as follows:



Schematic Diagram of Alarm Output (Normally Opened) Connection



Notice: The connection with normally opened alarm output (e.g. normally opened lock) is performed as shown in the following schematic diagram.



Schematic Diagram of Alarm Output (Normally Closed) Connection

- (5) **Reserved Interface:** Reserved for other uses.
- (6) **Audio Input Interface:** connect to external audio acquisition (e.g. MIC) for sound acquisition.
- (7) **Audio Output Interface:** connect to audio player (e.g. active speaker) for sound broadcasting.
- (8) **Analog Video Output Interface:** special for SD camera and engineering commissioning. After being installed and connected, this interface can be used

locally to connect with the image display device and adjust the camera angle to the appropriate monitoring area according to the scene in the video.

1.6 Basic Procedure

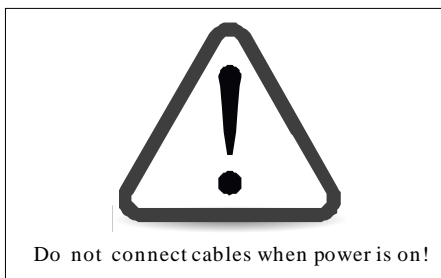
1. Unpack and check whether any component is missing;
2. Connect the camera to computer by means of patch cable;
3. If your computer IP is in a network section different from camera IP, please set it to the same network section as camera IP, such as, 192.168.1.87.
4. Log in the camera through client software or browser to check whether the video functions normally;
5. Adjust the code stream and other video parameters;
6. Modify the network parameters of camera and reboot the device;
7. Repeat Step 3;
8. Revisit the camera through client software or browser to check till the video functions normally;
9. Install the camera and adjust the camera angle to the appropriate area;
10. Visit the camera through client software or browse for video monitoring.

2 Installation and Network Configuration

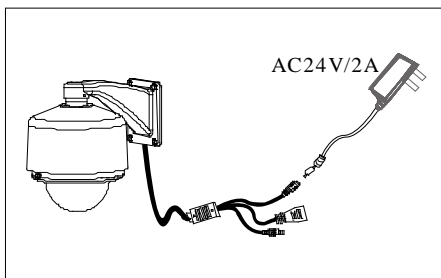
2.1 Hardware Installation

- Installation Notices:

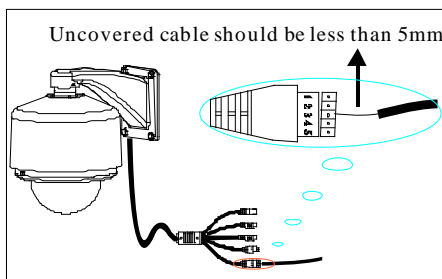
1. Read through the guide for installation prior to installation.
2. Check whether any component is missing against the packing list, if yes, please contact your supplier.
3. Wire during power off. If the camera does not function normally during operation, please cut off the power before check.



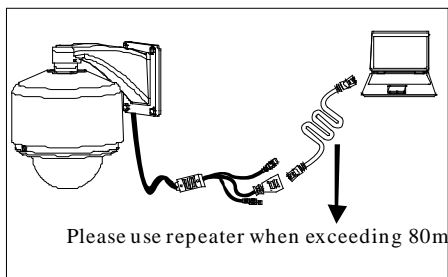
Notice: The wiring during power on may seriously damage the camera, which will be disqualified from the guarantee.



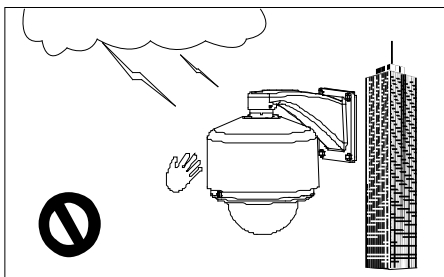
4. Please use the power (**voltage 24V AC and rating current no lower than 2A**) provided by the factory for the cameras. Much higher or lower voltage and direct current power may cause the camera failure.
5. Use the standard power cord when the power supply is too far away from the camera, and consider the voltage drop caused by long distance.
6. Read through the instructions for connecting terminal and wire strictly according to interfaces. Any damage to the camera due to improper operation will be disqualified from the guarantee.
7. All the exposed parts of connecting terminal should not exceed 5mm, in order to prevent any accidental contact from damaging the camera.



8. Mount the relay equipment in the middle to avoid signal attenuation when the straight communication distance from the camera to the incoming equipment exceeds 80m.

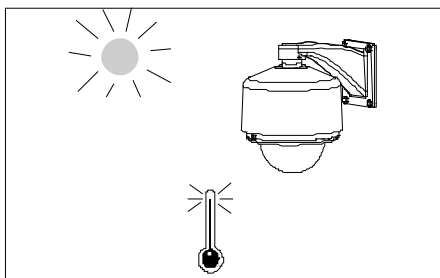


9. Pay attention to provide lightning protection if the camera is mounted outdoor.
Do not touch the camera during lightning.



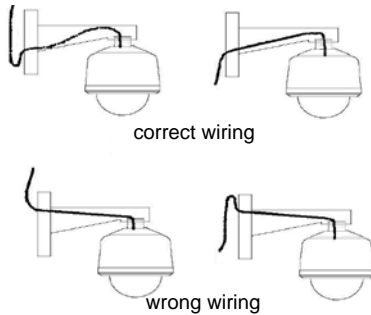
10. Use the camera in the working conditions:

Ambient temperature: $-20\text{ }^{\circ}\text{C} \sim +55\text{ }^{\circ}\text{C}$; ambient relative humidity: 10% ~ 95%RH.



11. Please keep the lens and transparent cover clean. If the transparent cover is dirty, please wipe it with clean soft cloth.
12. Do not let the cameras aim at intense light source for long period of time, in order to avoid the CCD failure, which results in no images or distorted images displayed.
13. The balls of the products feature best waterproof and damp-proof performance, which meet the requirement of IP66 standard. If the correct wiring mode is not used, the rain water will enter the core of the ball along the wire, to cause short

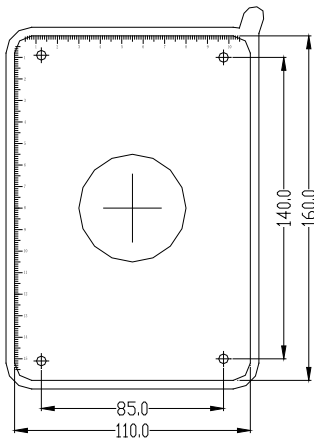
circuit of the control circuit board or even the damage of the camera. The correct and wrong wiring modes are shown as follows:



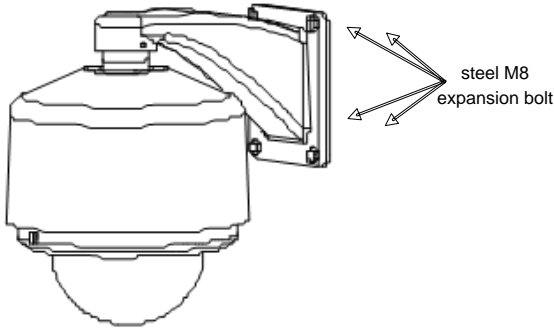
- Installation Diagram

Wall Mounted Mode:

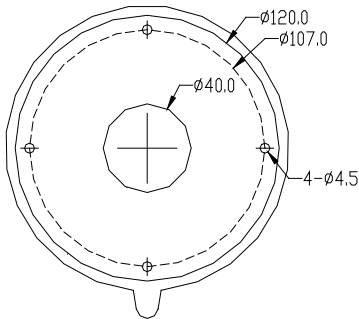
- 1 Stick the installation template onto the wall, and drill holes according to the markings on the template.



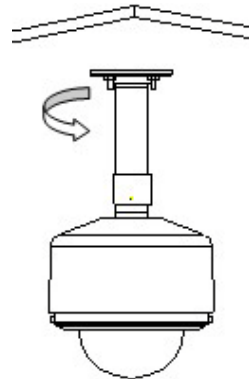
- 2 Fix the bracket in wall by 4 screws.



Note: The method of Pendant Mounting is the same as Wall Mounting.



Paper template for pendant mounting



Pendant mounting

2.2 Network Connection

The device can be connected to network in two ways. The first way is to connect to the network by means of Ethernet cable, and the second way is to connect to wireless network (optional).

-**Connect by Ethernet Cable**

1. Use Ethernet cables to connect the device to network or directly to computer.

2. Connect the power supply of the device.
3. During normal connection, if it is a 10M network, the orange lamp is always on; if it is a 100M network, the green lamp is also on. The physical connection with network is completed after the lamp shining.
4. In the “Start” menu, select “Programs”--“Accessories”--“Command Prompt”, and input the ping command to the device address (e.g.: type in “ping 192.168.1.88”). If “Request timed out” does not pop up, the device is successfully connected to network.



Notice: 1) The default IP address is “**192.168.1.88**” and the default HTTP port is 80. If needed to change IP address or port, refer to Network Setting in *WEB Server User Manual*.

2) If the device is in a network section different from computer, refer to How to Visit IPC on Internet in *WEB Server User Manual* for the connection during different network sections.

●**Connect to Wireless Network**

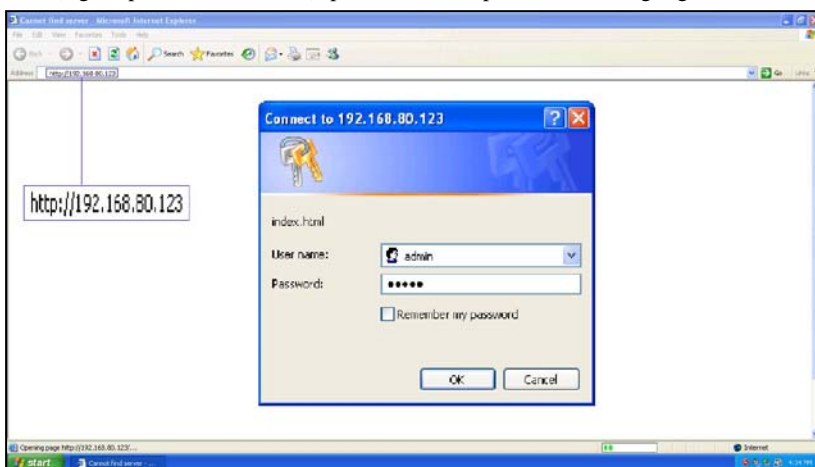
Before starting the wireless network, connect the IPC to network by Ethernet cable, visit the device through browser, enter “Network Setting” interface, and set the wireless network connection following the operating procedure, as detailed in Network Setting in *WEB Server User Manual*.

3 Accessing device

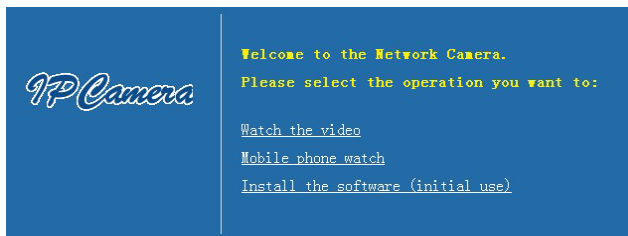
There are 4 methods can be used to access the device: WEB Browser, RTSP Media Player, Mobile Device and Video Surveillance Software (ZKiVision client software).

3.1 Using WEB Browser

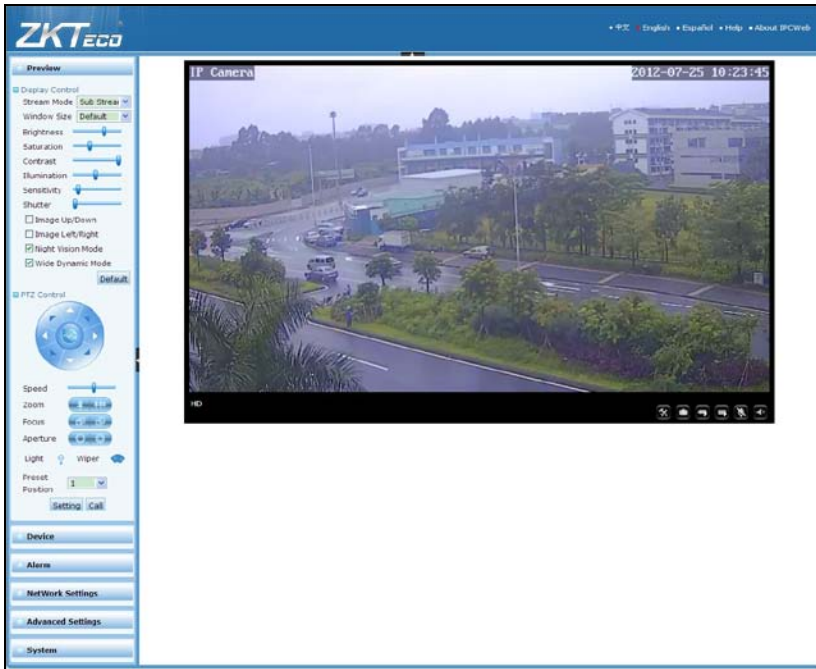
1. Open a browser, type in the dynamic domain name or IP address of the device (e.g. <http://192.168.80.123>), press "OK" to open the following login interface:



2. Type in user's name and password, and click "OK" and the guide page will show as below:



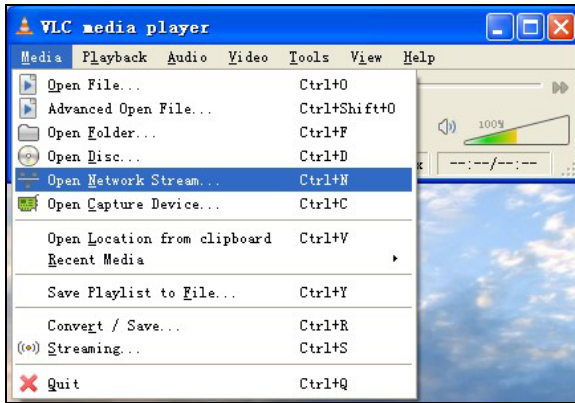
3. Click **Watch the video** to enter **Preview** interface:



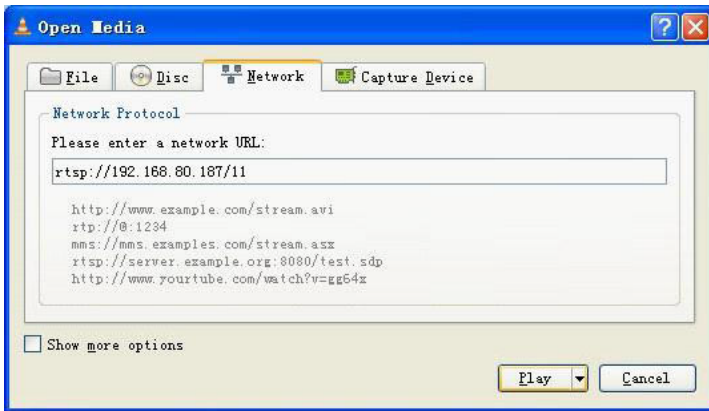
Note: When accessing the device via browser for the first time, it is necessary to download the control. More details about how to use browser for video surveillance, please refer to *WEB Server User Manual* in the supplied CD.

3.2 Using RTSP Media Player

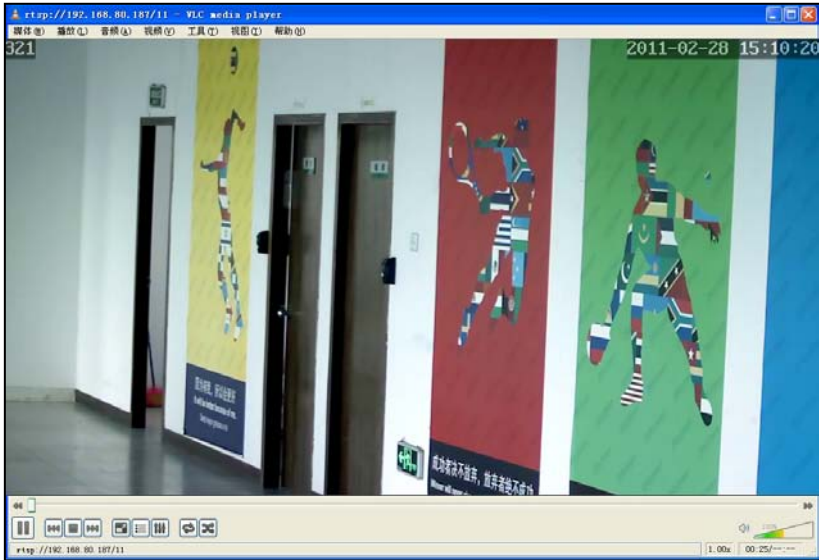
1. Download and install a media player supporting RTSP protocol, e.g. **VLC media player**.
2. Open the media player, select the menu “Media”—“Open Network Stream”, pop up the input interface of URL.



3. Type in the network URL in the form of `rtsp://<IP address>:<RTSP port>/<stream code>`.



4. Click "Play" and the media player will play the real-time video of the device.



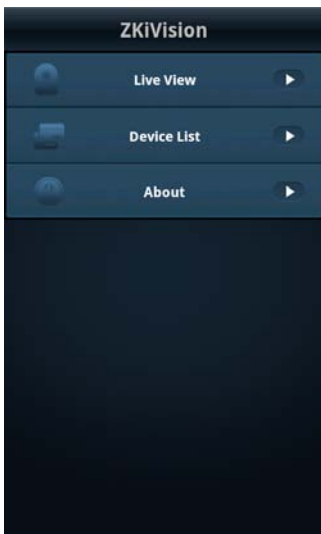
Note: 1) The default RTSP port of device is 554. If it must be modified, please refer to *WEB Server User Manual* in the supplied CD.

2) If it is necessary to learn about how to use RTSP media player for video surveillance, please refer to *WEB Server User Manual*.

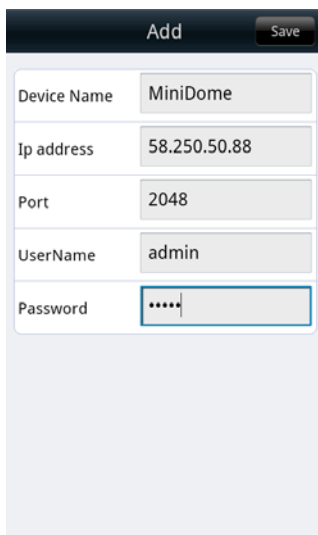
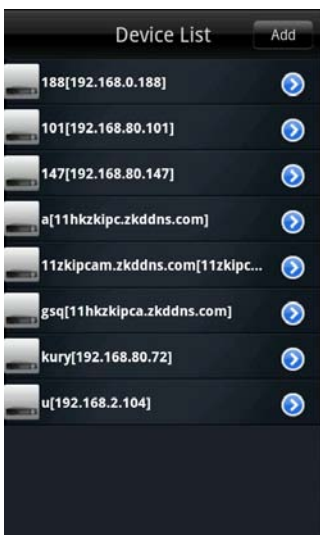
3.3 Using Mobile Phone

If it is necessary to use mobile phone for video surveillance, please firstly ensure the device can be accessed on Internet. Please refer to *ZKiVision User Manual (Mobile Version)*.

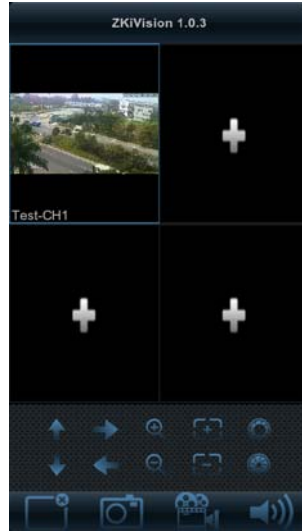
1. Install the surveillance software into your mobile phone.
2. Click the icon "ZKiVision" to enter the software.



3. Choose "Device List" and click "Add" to add devices, type in the user name, password, domain name and port of the device, click "Save" to complete it.



4. Choose “Live View” on the initial interface, click the cell and click again to select the device to play its live video.



Note: 1) The operating system of mobile device must be **Android** or **iOS** or **BlackBerry**.

2) As the internet service is required for watching video, please consult with your internet service provider for specific charges.

3) Please refer to *ZKiVision User Manual (Mobile Version)* in the supplied CD for more details.

3.4 Using Video Surveillance Software

ZKiVision Client Software is our company's free video surveillance software, which can help manage and monitor multiple devices in a real-time manner. Install the software in the supplied CD, and add devices to the software. Then the real-time

monitoring can be started. If needed to learn about how to use the video surveillance software, refer to *ZKiVision Client Software User Manual* in the CD.



4 Extended Functions

The mini PTZ dome IP camera supports a maximum of 255 presets, among which presets 90 to 130 and preset 255 are used for special functions.

95 (invoke preset 95): Enter the high speed dome menu

91 (invoke preset 91): Enter the camera menu (if camera supports this feature)

128 (invoke preset 98): Invoke limit scanning

125 (configure preset 125): The auto horizontal scanning mode

126 (configure preset 126): Enter the limit scanning settings

127 (configure preset 126): Left limit setting

128 (configure preset 126): Right limit setting